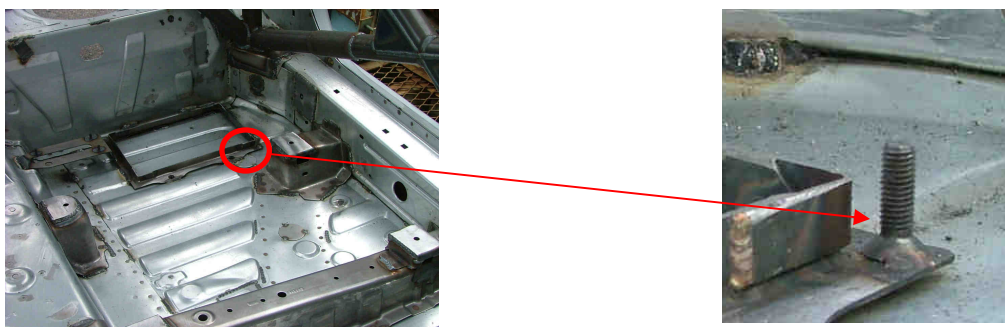


INFO-TECH CITROËN Racing C2 R2 et C2 R2 MAX N° 26/10.

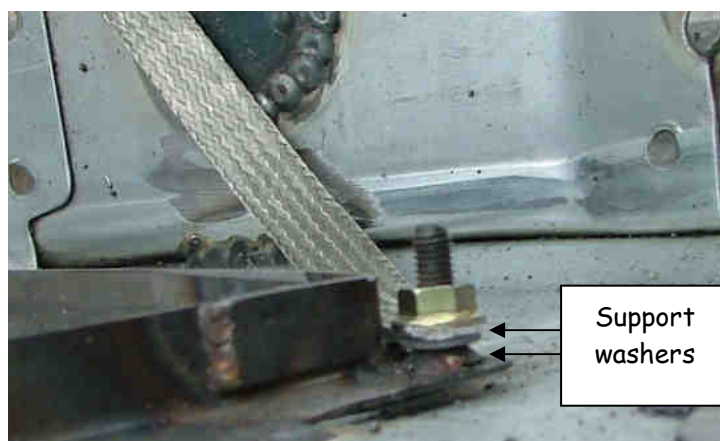
Subject: Battery ground braid mounting.

Dear Customers,

Some C2R2 and C2R2 Max bodyshell were delivered with countersunk head screw (pictures below) to fit the ground braid on the bodyshell. The assembly with a countersunk head screw can generate a stamping of the ground braid that can induce a deterioration of the electrical contact.



In order to avoid any electrical problems we suggest you to make an assembly with two thick flat washers as shown below.



Thank you for your attention.

JP. Gauduchon, 01/03/2010